

Floor plan measurements are approximate and are for illustrative purposes only. While we do not doubt the floor plans accuracy, we make no guarantee, warranty or representation as to the accuracy and completeness of the floor plan. You or your advisors should conduct a careful, independent investigation of the property to determine to your satisfaction as to the suitability of the property for your space requirements.

Price: \$2,900,000

Beds: 3 plus study

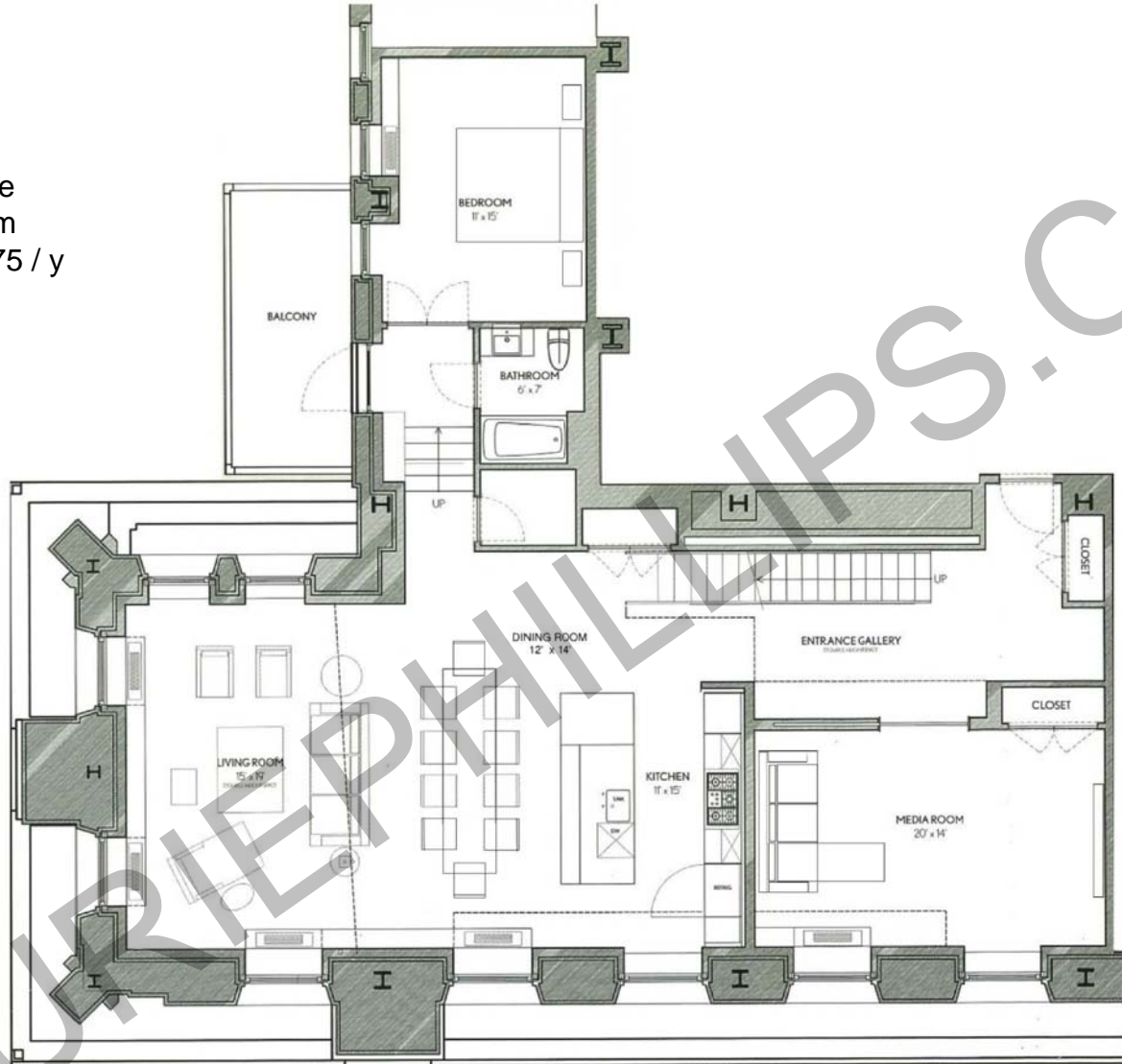
Baths: 3 full baths

Square Feet: 3,000+

Parking: One on-site space

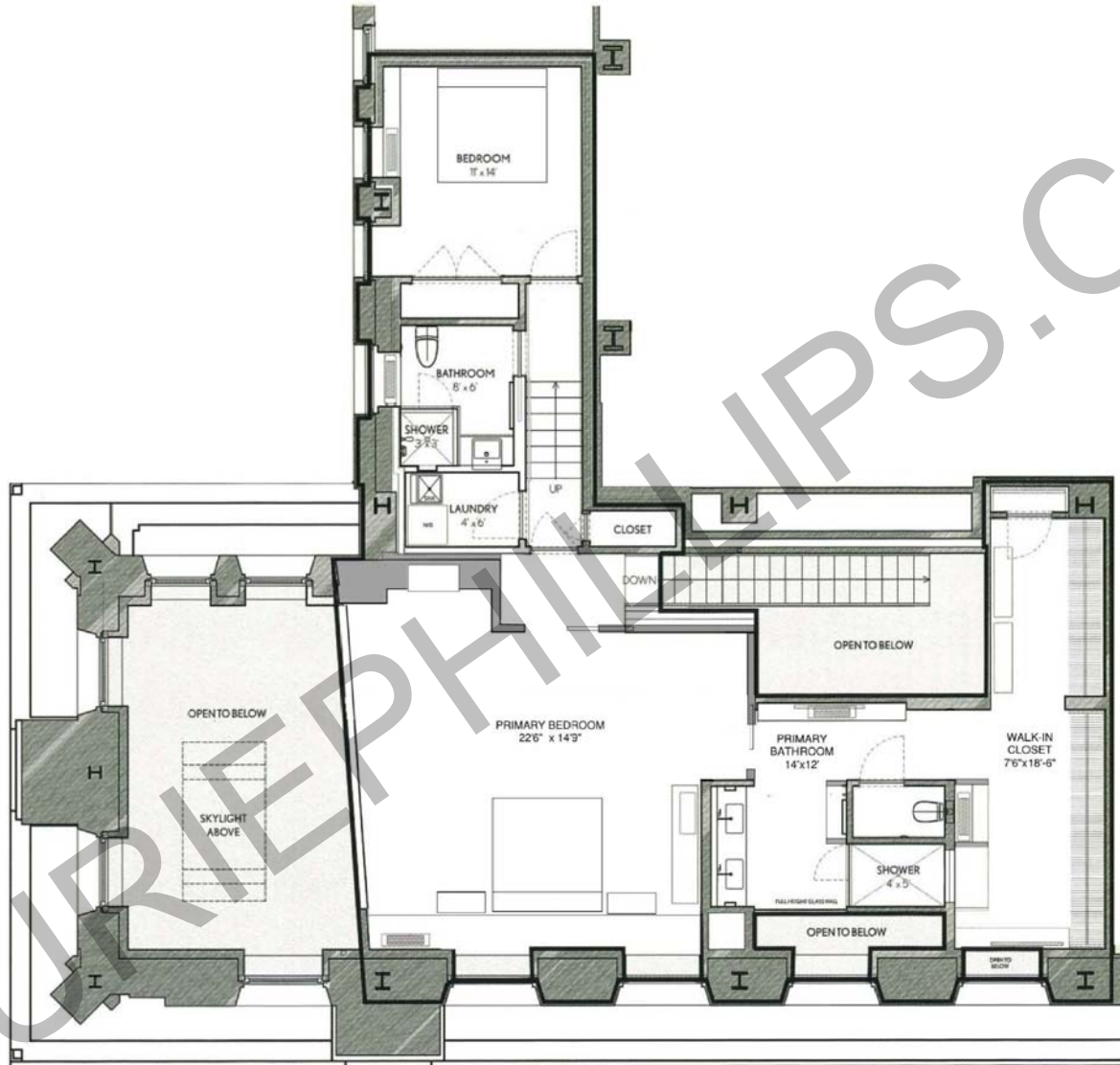
Condo Fees: \$4,068.44 / m

Real Estate Taxes: \$36,775 / y



**PENTHOUSE
SOUTHEAST
ENTRY LEVEL**

Floor plan measurements are approximate and are for illustrative purposes only. While we do not doubt the floor plans accuracy, we make no guarantee, warranty or representation as to the accuracy and completeness of the floor plan. You or your advisors should conduct a careful, independent investigation of the property to determine to your satisfaction as to the suitability of the property for your space requirements.



UPPER LEVEL